

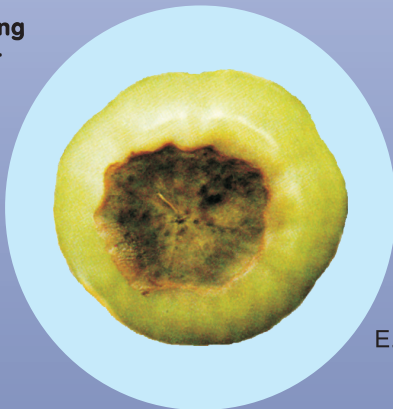
Chelated Calcium formulated in water soluble powder

For the correction of the Iron deficiency
in all crops

Elem-Ca

**Chelating
agent
EDTA**

**Contains
9.5%
Calcium**



Net Weight

- 1 Kg ☐
5 Kg ☐
25 Kg ☐

E.C. Fertilizer

Elem-Ca contains 9.5 % chelated Calcium (chelating agent EDTA) and is used for the correction of calcium deficiency in almost all crops of vegetables and cereals.

It is not applied foliarly in fruit tree crops.

APPLICATION

Predilution of the product is not required. Just add the recommended quantity of powder in an appropriate amount of water as to ensure full coverage of the surface you want to spray. Agitate for a while as to ensure a complete dilution and adjust the nozzles of the sprayer in order to spray the finest droplets as possible. Then spray the entire area of the leaf and the shoot thoroughly. Foliar applications must be avoided in conditions of strong wind, impending rain and intense sunlight. It is recommended to apply the product in the afternoon when the atmospheric humidity is optimum. In case of rainfall within 4 hours from the spraying, you must spray again 3-4 days later. When used without mixing with other pesticides it is recommended to add a sticking agent in the solution.

PRODUCED BY

HUMOFERT



1 Ermou & Theotokopoulou, Metamorphosis, Greece
Tel. +30 210 284 5891 Fax. +30 210 281 7971
E-mail: info@humofert.gr Web Site: www.humofert.gr

APPLICATION TIMING

As to achieve better results, foliar applications should start at the beginning of the season when there is sufficient foliage to absorb the spray. It is always better to apply many repeated sprays at a low application rate rather than one at a higher application rate. Avoid foliar applications during blooming. In cases of severe calcium deficiency, applications must be repeated every 7-10 days.

APPLICATION RATES

Generally for all crops
Apply foliarly 1 - 2 kg/ha.

Notes

1. **Elem-Ca** must not be applied foliarly in fruit crops.
2. Application rates always depend on the degree of the calcium deficiency, on the type and the size of the crop and the environmental conditions.

COMPATIBILITY

It can be mixed with almost all insecticides, fungicides and pesticides. It is also compatible with the rest of the micronutrients **Elem** as well as with solutions containing phosphorus, such as liquid foliar fertilizers. A test of compatibility is always recommended before mixing in the tank.

PRECAUTIONS

Keep it well sealed and store in its original container. Wash thoroughly your hands after handling. Keep out of reach of children and pets. Store in a dry place and away from strong light. Do not apply in crops suffering stress, such as extreme temperatures, strong winds etc. Avoid swallowing and contact with eyes and skin.